



CLIMATE CONTROL SYSTEMS / RECREATIONAL VEHICLES

UNLIMITED COMFORT FOR EVERY JOURNEY

Auxiliary heaters and air conditioning systems

THE PERFECT TEMPERATURE, EVERY TIME

Being on the road in your motorhome means enjoying nature and freedom: driving wherever you want, staying wherever you want, and hitting the road whenever you want. Be it summer or winter, no one wants the weather or the seasons dictating their itinerary.

With an Eberspächer auxiliary heater or climate control device, you can satisfy your wanderlust all year round. You can rest assured that it runs efficiently and quietly, courtesy of our state-of-the-art technology. What's more, using a fuel operated heater helps to reduce your propane consumption – so there's nothing holding you back!





UNLIMITED COMFORT SOLUTIONS FOR HEATING AND COOLING

Whether you're traveling to Spain or the North Cape, Eberspächer is your go-to partner for solutions to keep the temperature in your trusty motorhome just right. Thanks to our extensive expertise in climate control systems, we can offer our customers tailored solutions for all their heating and cooling needs, alongside the perfect control units for easy and convenient operation. As a one-stop shop, we are proud to provide our solutions from a single source.

Our products range from highly efficient air heaters for creating the perfect temperature in no time, water heaters for mist-free wrap-around windshields or for warm tap water when used with a boiler, to a broad selection of sophisticated accessories and cutting-edge control units for your new auxiliary heater. Our cooling system is also a real winner: it uses very little electricity and runs quietly. With climate control taken care of, you can sit back and enjoy your vacation.

SAVE PROPANE WHILE BOOSTING YOUR VACATION BLISS

The advantages of an Eberspächer fuel operated heater compared with a propane heater really do speak for themselves. Propane heating uses about 80% of the propane reserves on winter camping trips, meaning you either have to transport a substantial supply of propane cylinders along with you or take on the hassle of constantly finding new cylinders and the right adapters – no mean feat when you are abroad. A diesel or gasoline operated heater gets rid of all that stress as it runs off the motorhome's large fuel tank – and very efficiently at that. This means you will need propane only for cooking and to operate the refrigerator.

ADVANTAGES:

- Uses fuel from the motorhome's large fuel tank
- Fuel is conveniently available at service stations around the world
- Time-consuming task of finding and changing propane cylinders reduced to a minimum
- Fewer propane cylinders frees up load capacity and storage space
- Does not eat into the propane supply for cooking and for the refrigerator



CONTROL
UNIT



REMOTE
CONTROL



AIR
OUTLETS



AIR
CONDITIONERS



WATER
HEATER



AIR
HEATER



AIR
HEATER



WATER
HEATER



HIGH-VOLTAGE
WATER HEATER*



BLOWER
HEATER



FUEL
OPERATED
HEATERS



ELECTRICAL
HEATERS

* Only available to manufacturers.
Retrofitting not currently possible.



AIR
CONDITIONERS



CONTROL
UNITS
AND ACCESSORIES



A photograph of the Aurora Borealis (Northern Lights) in a snowy landscape. The aurora is a vibrant green and yellow light display in the dark sky, with silhouettes of trees and a snow-covered ground in the foreground.

WHERE FREEDOM BEGINS, COMFORT SHOULD NOT END

Enjoy real feel-good moments wherever you are. Our fuel operated air and water heaters ensure that nobody has to freeze. They are reliable and quiet and give you independence.

What all our fuel operated heating systems have in common:

- Maximum self-sufficiency: low consumption of electricity and fuel and utilisation of your vehicle's large fuel tank.
- Low noise level: thanks to the extremely quiet operation of the heater and the intelligent metering pump control, the heaters are barely audible inside and outside the vehicle.
- Maximum efficiency: at over 80 percent, Eberspächer auxiliary heaters are extremely efficient.
- Sophisticated accessories: system components specially developed for motorhomes ensure noise optimisation and even heat distribution.
- Simply reliable: our fuel operated air and water heaters offer maximum safety.



EBERSPÄCHER AIRTRONIC AIR HEATERS

If you want a rapid, convenient solution to make the interior of your motorhome toasty warm, then look no further than the Eberspächer Airtronic air heater. The Airtronic can quickly heat up your interior to the exact temperature you desire because it works by heating only the air. And because it is extremely efficient and quiet, using it for long periods or at night is no problem.

AIR HEATER ADVANTAGES:

- Power setting for extremely fast interior heating
- Direct heat and efficient operation: unlike in a combination heater, the tap water is not heated along with the air, ensuring very high efficiency
- Extremely low fuel and electricity consumption
- Automatic interior temperature control with temperature pre-setting
- Prevents condensation from forming and clears icy or foggy windows
- Space-saving installation either underfloor, in a false floor, in a seat base or storage compartment
- Fuel is supplied from the vehicle's tank

AIRTRONIC 3 ADVANTAGES:

- Runs extremely quietly:
 - Enjoy some calm and tranquility: Dynamic, stepless heating performance control ensures whisper-quiet operation by switching the heater on and off as little as possible.
 - Optimized temperature sensor for accurate heating performance control
 - Virtually silent fuel delivery thanks to a new, electrically controlled metering pump.
- Can be operated anywhere in the world: the integrated altitude sensor enables automatic altitude adjustment up to 5,500 m*; no additional altitude kit necessary
- Brushless motor for increased service life
- A wide range of heaters to suit any heating requirement from 2 kW to 8 kW
- Additional installation positions possible
- Also available as gasoline models (Airtronic S and Airtronic M models)



EBERSPÄCHER AIRTRONIC

THE RIGHT AIR HEATER FOR EVERY NEED

AIRTRONIC S3 COMMERCIAL



- Auxiliary heater with max. 2.2 kW heating performance
- Very small dimensions, ideal for tight installation spaces (will even fit under the seat structure)
- Also suitable as a supplementary heater for the front area

Version		D2L (diesel)	B2L (gasoline)
Voltage	V	12*	12
Heating performance control		Stepless	
Heating performance	kW	0.85 to 2.2	1.0 to 2.0
Electrical power consumption	W	6 to 28	11 to 26
Fuel consumption	l/h	0.1 to 0.27	0.14 to 0.26
Weight	kg	2.5	
Main dimensions L × W × H	mm	310 × 115 × 122	

* Also available as a 24 V diesel version. Please see our website for more details.

AIRTRONIC M3 COMMERCIAL



- Auxiliary heater with powerful heating performance up to 4 kW
- Compact dimensions

Version		D4L (diesel)	B4L (gasoline)
Voltage	V	12*	12
Heating performance control		Stepless	
Heating performance	kW	1.05 to 4.0	1.3 to 4.0
Electrical power consumption	W	6 to 37	8 to 38
Fuel consumption	l/h	0.12 to 0.49	0.17 to 0.55
Weight	kg	4.5	
Main dimensions L × W × H	mm	376 × 140 × 150	

* Also available as a 24 V diesel version. Please see our website for more details.

AIRTRONIC M3 RECREATIONAL



- A heater developed specifically for motorhomes; high air throughput suitable for long, complex heating air ducting.
- Auxiliary heater with powerful heating performance up to 4 kW
- Compact dimensions

Version		D4R (diesel)*	B4R (gasoline)*	D4R CI-Bus (diesel)*/***
Voltage	V	12**	12	12
Heating performance control		Stepless		
Heating performance	kW	1.05 to 4.0	1.3 to 4.0	1.05 to 4.0
Electrical power consumption	W	7 to 53	10 to 54	7 to 53
Fuel consumption	l/h	0.11 to 0.49	0.17 to 0.55	0.11 to 0.51
Weight	kg	4.5		
Main dimensions L×W×H	mm	371×140×150		

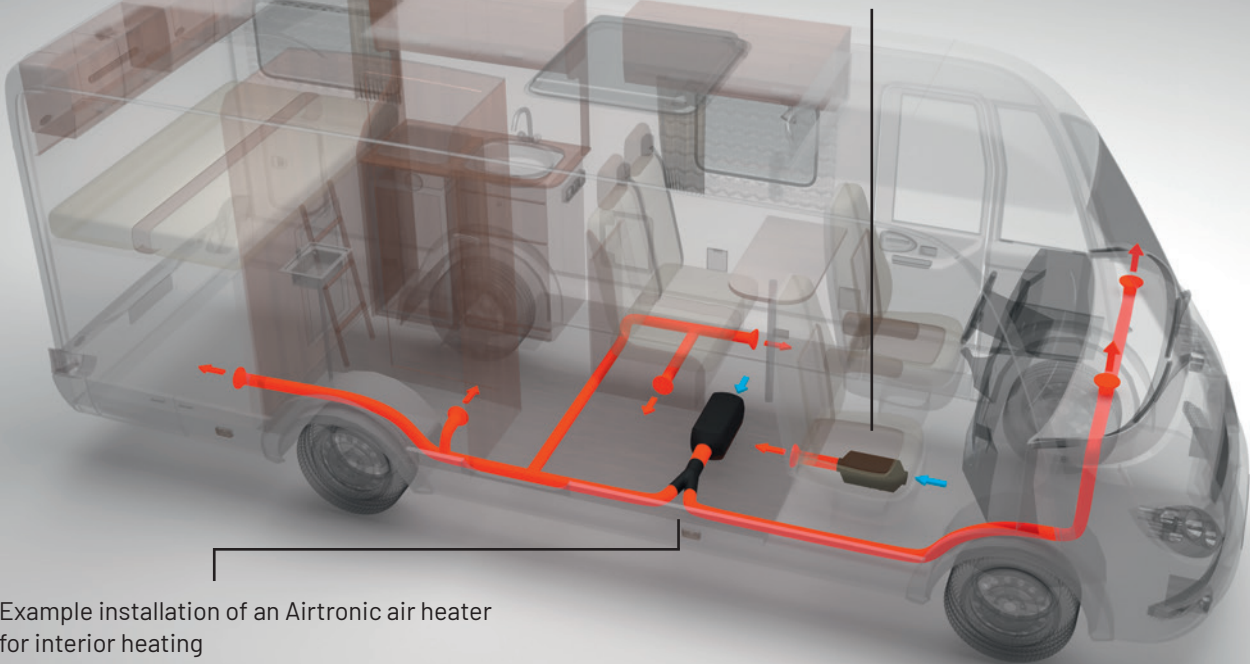
* Can be used in motorhomes and boats with long, complex heating air ducting, for example, if several rooms are to be heated.

** Also available as a 24 V diesel version. Please see our website for more details.

*** Auxiliary heater for integration into the CI-Bus on-board management system.

Please see our website for more information about the 6 kW **Airtronic L3** and the 8 kW **Airtronic XL3**.

Example installation of a small Airtronic air heater as a supplementary heater for the front area and for winter camping



Example installation of an Airtronic air heater for interior heating



EBERSPÄCHER HYDRONIC WATER HEATERS

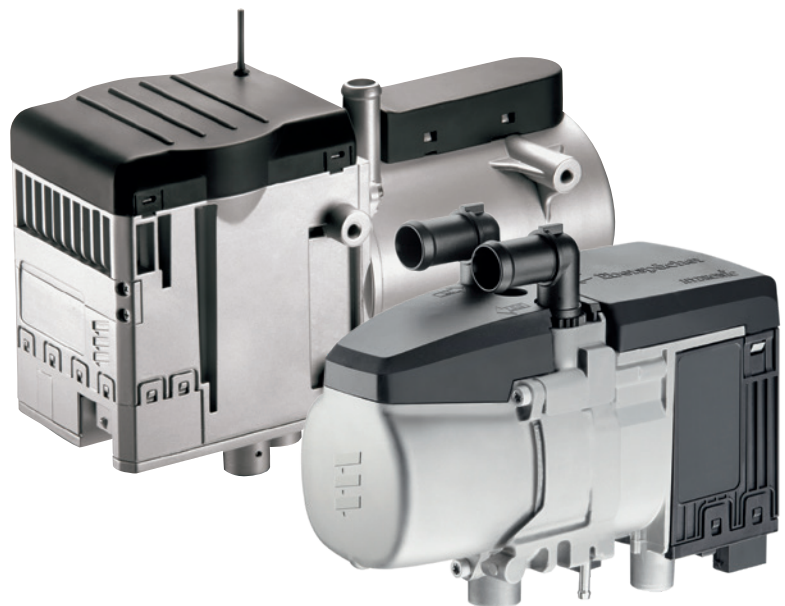
The Eberspächer Hydronic water heater is a genuine all-rounder. It can be easily integrated into the engine's existing coolant circuit, takes up minimal space and can be used as a supplementary heater for the front area and for pre-heating the engine or as a stand-alone solution for heating the interior. When used in combination with a boiler, the Hydronic also lets you heat your tap water – whether for washing up in the kitchen or for a long, hot shower after a hike in the snow.

WATER HEATER ADVANTAGES:

- Extremely high heating performance up to 12 kW
- Two-fold benefit of heated interior plus pre-heated engine: starting is more gentle on the engine, uses less fuel, and is environmentally friendly
- Can be used to heat tap water in combination with a boiler
- Quickly clears icy windshield or steamed-up windows on the inside
- Runs quietly

ADDITIONAL FEATURES:

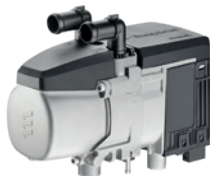
- Heat distribution via the vehicle's air ducts or convector
- Low fuel and electricity consumption
- Fuel is supplied from the vehicle's tank
- Reduces propane consumption
- Available as diesel or gasoline models
- Option for space-saving installation in the engine compartment
- Can be operated at high altitudes



EBERSPÄCHER HYDRONIC

THE IDEAL CHOICE AS A FRONT OR MAIN HEATER

HYDRONIC S3 ECONOMY



- State-of-the-art heater that simultaneously heats the engine and front area
- Manual high altitude operation over 1,500 m with the EasyStart Pro control unit
- Can be retrofitted as a supplementary heater for the front area and for pre-heating the engine

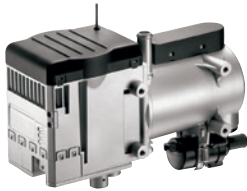
Version		Hydronic S3 Economy*	Hydronic S3 Economy*	Hydronic S3 Economy*	Hydronic S3 Economy*
Model (fuel)		D4E (diesel)**	D5E (diesel)**	B4E (gasoline)	B5E (gasoline)
Voltage	V	12			
Heating performance	kW	1.3 to 4.3	1.3 to 5.0	1.8 to 4.3	1.8 to 5.0
Power consumption, heater	W	5 to 27	5 to 32	7 to 24	7 to 32
Power consumption, water pump	W	18			
Fuel consumption	l/h	0.15 to 0.53	0.15 to 0.59	0.23 to 0.57	0.23 to 0.67
Dimensions L × W × H	mm	215 × 91 × 124			
Weight empty	kg	2.0			

* For mains operation (230 V/50 Hz), e.g. in camping or parking areas, installation must be carried out with the special cable harness (item no.: 25 2652 82 11 00). The cable harness is included in the universal installation kit for recreational vehicles and boats (item no.: 25 2652 82 00 00).

** Also available as a Hydronic S3 Commercial 24 V diesel version. Please see our website for more details.



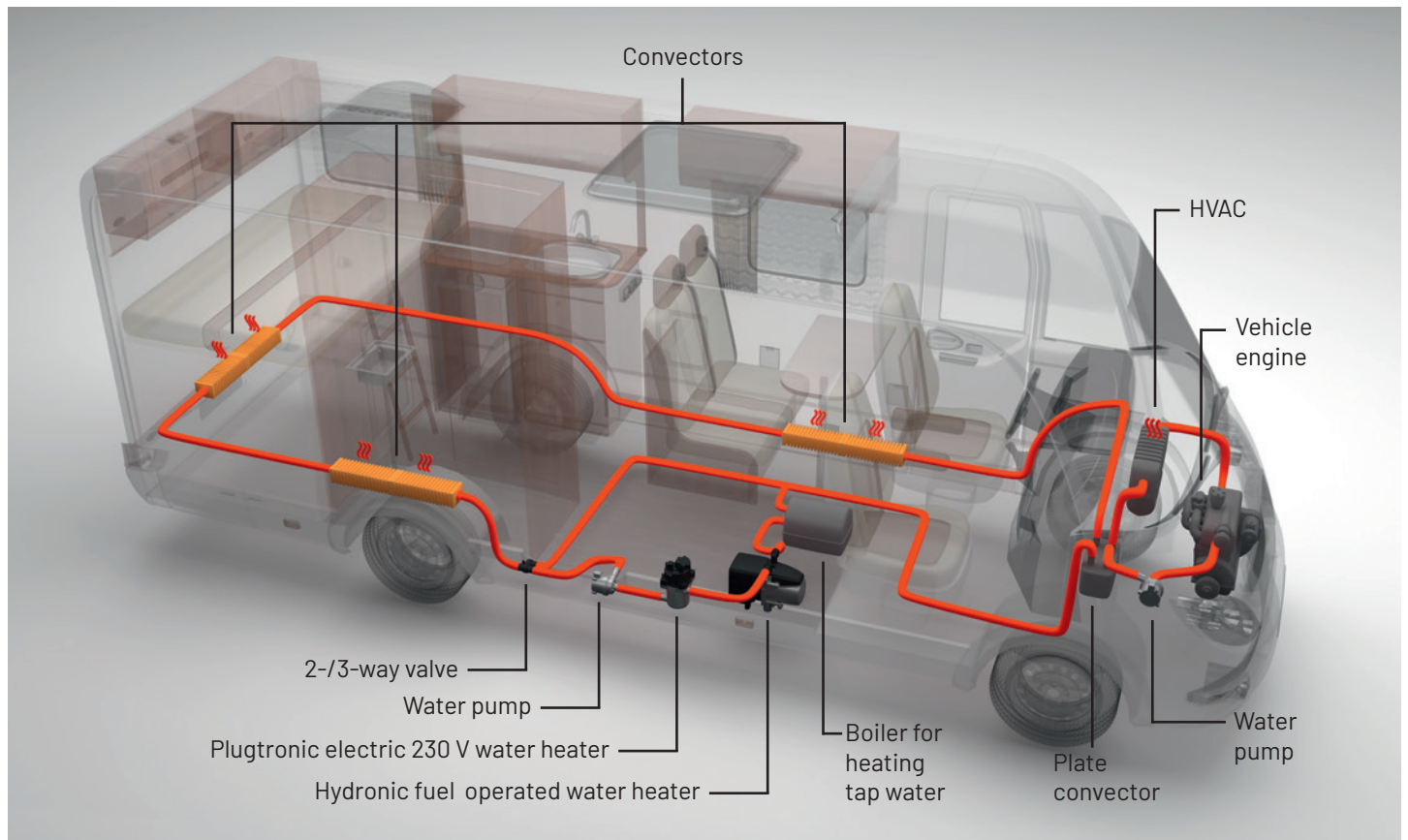
HYDRONIC M



- Available in three models between 8 and 12 kW heating performance (M8/M10/M12)
- Very long service life (6,000 h)
- Standard altitude capability up to 3,500 m (M10/M12)

Diesel version		Hydronic M8*	Hydronic M10	Hydronic M12
Voltage	V	12 / 24		
Heating performance	kW	1.5 / 3.5 / 5.0 / 8.0	1.5 / 3.5 / 8.0 / 9.5	1.2 / 1.5 / 3.5 / 5.0 / 9.5 / 12.0
Power consumption, heater	W	35 / 39 / 46 / 55	35 / 39 / 60 / 86	34 / 35 / 39 / 46 / 86 / 132
Power consumption, water pump	W	29		
Fuel consumption	l/h	0.18 / 0.40 / 0.65 / 0.90	0.18 / 0.40 / 0.90 / 1.20	0.15 / 0.18 / 0.40 / 0.65 / 1.20 / 1.50
Dimensions L × W × H	mm	331 × 138 × 221		
Weight	kg	6.2		

* 100% biodiesel-compatible in accordance with FAME DIN EN 14214



Example installation of a Hydronic water heater in combination with an electric heater



A person with dark, curly hair is seen from the side, looking out of a motorhome window. The background outside the window is a blurred natural landscape with trees. In the foreground, the person's hand is holding a smartphone, and a colorful magazine is partially visible on a surface next to it.

MADE FOR LIFE ON THE ROAD

Regulate the heat in the interior quickly and easily while you're in the vehicle, pre-program the operating times at your leisure, or simply pre-heat your motorhome in advance from the piste. All this is possible – you can even combine offline and online control. What matters is what you want.

A built-in control unit is always the right choice for a motorhome, enabling you to make custom settings in your vehicle at any time. Even when you're not in the vehicle, you are still in full control via an additional app.



CONTROL UNITS FOR AIRTRONIC AND HYDRONIC

With our modern EasyStart control units, you can easily enjoy the comfort of your auxiliary heater in no time. They check all the right boxes for even the most discerning of motorhome owners: they are intuitive to operate and boast an attractive design and high-quality workmanship. You can choose between a built-in control unit or a web-based remote control system that can be linked up to many of the devices currently available. The Eberspächer EasyStart is the modern way to operate heaters.

EASYSTART PRO



The EasyStart Pro control unit sets the new benchmark for our line of control units. As well as a timer function that allows up to three programming locations to be set, the EasyStart Pro comes with numerous practical features:

- Built-in control unit with integrated temperature sensor
- Operation of up to two heaters separately or two identical heaters (Airtronic or Hydronic) in a group
- Simple plain text diagnostics for users
- Integrated residual heat function for Hydronic heaters: efficient heating using the engine's residual heat
- Can be combined with the EasyStart Web**

EASYSTART WEB



With the EasyStart Web you can start your heater anytime and anywhere, regardless of where you are or where your vehicle is parked. The web-based remote control uses a web server that receives the commands you enter from the smartphone app or web browser and sends them in data form to the recipient via all the available cell phone networks. It couldn't be easier to use, and the range is unlimited:

- Always uses the cell phone network with the best signal*
- No need to insert or replace a SIM card
- Option to book a convenient, cost-effective 12-month flat rate
- Roaming function enables use in other countries without additional costs
- Displays the current status (e.g. operating mode, interior temperature, timer)
- The workshop can carry out detailed remote diagnostics
- Can be combined with the EasyStart Pro**

* Network coverage available in the following countries: Austria, Belgium, Czechia, Denmark, Estonia, Finland, France, Germany, Italy, Latvia, Lithuania, Norway, Poland, Romania, Sweden, Switzerland, the Netherlands and the United Kingdom. An up-to-date list of network coverage is available at: <https://myeberspaecher.com/#/customer/serviceDescription>

** Requires software update

SMALL, FLEXIBLE AND ALWAYS WHERE YOU NEED HEAT

Whether in an e-camper, in hybrid vehicles or in vehicles with a combustion engine at the campsite – as soon as electricity is available, the E-Airtronic is the intelligent heating solution for motorhomes and caravans. Its small dimensions and modular design ensure that heat arrives exactly where it is needed.

With a heating output of 1kW, the E-Airtronic is extremely powerful and whisper-quiet at the same time. It offers a large number of different installation options in your vehicle. Thanks to 230 V operation, it can be used in a variety of ways: in electric vehicles via the traction battery, in hybrid vehicles and also in caravans or vehicles with a combustion engine via the power supply at the parking space or using additional batteries.





EBERSPÄCHER E-AIRTRONIC

The new E-Airtronic electric air heater works with 230 V and a heating output of 1kW. It ensures pleasant temperatures in the interior of electric and hybrid vehicles. For vehicles with combustion engines and caravans, the heater can also be operated stationary via shore power. The small air heater can be installed easily and space-savingly wherever heat is actually needed in the vehicle.

E-AIRTRONIC ADVANTAGES

- 230 V electric heater with 1kW heating power
- Very small dimensions
- Simple installation wherever heat is required
- 12 V stepless & brushless fan
- Very quiet operation with variable speed
- Integrated noiseless relay for PTC stages
- Removable filter
- Variable installation options in the vehicle
- Can be equipped with grid or duct connection
- Coolant heating can also be integrated

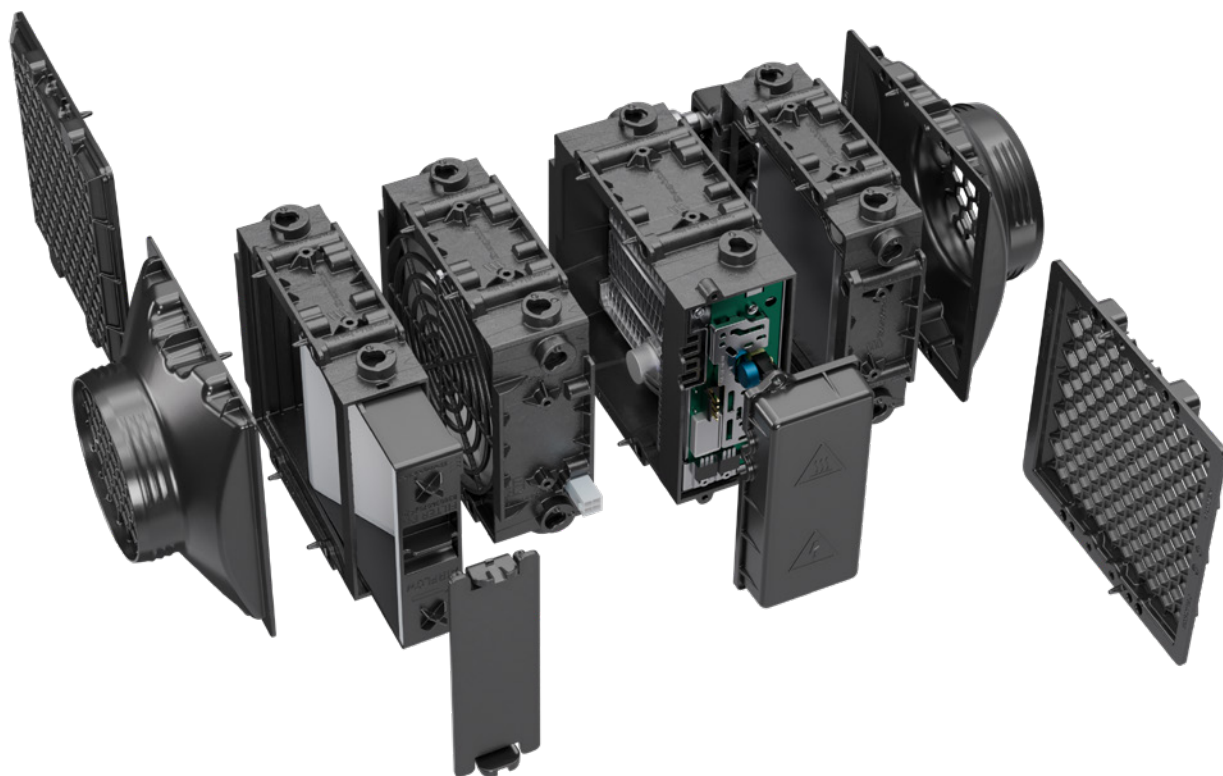
MODULAR BUILDING BLOCK SYSTEM

The modular E-Airtronic system enables a wide range of product versions.

E-AIRTRONIC EHV1 230V GDF



Voltage (PTC)	V	230 V AC / 50-60 Hz
Voltage (fan)	V	12 V DC
Heat output	W	1,000 W \pm 20%
Weight	kg	1.45
Maximum current (heating/PTC)	A	4.5
Dimensions L x W x H	mm [inch]	207 x 185.6 x 139
Control unit	Can be controlled via KANBOX with touchscreen or via a manual control element	



E-AIRTRONIC EHV1 110V GDF



The 110V version of the E-Airtronic is available for vehicles in North America and large parts of Asia. Apart from the voltage, it has the same features as the 230V version.

HV1 GD



The HV1 fan heat exchanger is an ideal solution for vehicles with a combustion engine. It consists of a 12 V fan and a water heat exchanger and can therefore be integrated into the coolant circuit. This allows the interior to be heated while driving. When stationary, the HV1 GD independently heats in conjunction with a Hydronic auxiliary heater.



An aerial photograph of a white motorhome parked on a dirt road in a lush green forest. The motorhome has a large solar panel array mounted on its roof. In the background, a clear blue lake is visible, surrounded by more trees. The scene is bright and sunny, with shadows cast by the trees and the motorhome.

COOL TECHNOLOGY FOR A FRESH BREEZE

If you want to enjoy the summer, you shouldn't break a sweat in your motorhome either. Our new Breezonic family of air conditioners is not only extremely powerful, but also extremely efficient thanks to its heat pump technology. The speed-controlled compressor creates a constantly pleasant room climate and also ensures that the Breezonic does its job particularly quietly.

The Breezonic is also efficient when it comes to its weight. It has the best power-to-weight ratio of all air conditioning systems. And when it comes to operation, this air conditioning system leaves nothing to be desired. Whether on the appliance, by app, by remote control or via a built-in touchscreen display – the Breezonic makes feeling good twice as convenient.

EBERSPÄCHER BREEZONIC

POWERFUL AIR CONDITIONING SYSTEM WITH HEAT PUMP FUNCTION

The very powerful Breezonic air conditioning units with heat pump function are the new state-of-the-art rooftop units that work with the more sustainable refrigerant R32. The innovative inverter technology ensures very quiet, constant operation and low energy consumption thanks to the speed-controlled compressor. The appliances have been developed for maximum efficiency. With eight operating settings, they adapt perfectly to your individual comfort requirements.

BREEZONIC PERFORMANCE HP/ BREEZONIC PERFORMANCE PLUS HP



ADVANTAGES:

- Combined high-performance cooling and heating via heat pump
- Extremely quiet operation and low energy consumption thanks to a variable-speed compressor
- Very low power consumption due to smooth start-up
- Uses the more sustainable refrigerant R32
- Modern design
- Night mode for quiet operation while you sleep
- Eco mode for low energy consumption
- Very fast interior cooling thanks to turbo cooling function
- Operating temperature from -7 to +52°C

		PERFORMANCE	PERFORMANCE PLUS
Current voltage	V	230 V AC / 50 Hz	
Cooling capacity	W	2,500	3,500
Heat output	W	2,400	3,600
Weight of roof/air distribution box	kg	32.9 / 2.8	35.1 / 2.8
Current max. average cooling	A	4.1	6.5
Current max. average heating	A	4.2	6.0
Max. Airflow	m ³ /h	542	608
Refrigerant		R32	
Dimensions of the roof unit (L × W × H)	mm	1,051 × 698 × 250	
Indoor unit dimensions (L × W × H)	mm	503 × 482 × 45	
Hatch/roof openings	mm	360 × 360 / 400 × 400	
Roof thickness (standard)	mm	25 – 75	
Roof thickness (with additional kit)	mm	75–100	
Communication interfaces		CI-Bus, RV-C, Bluetooth (App)	
Control unit		Control via app, touchscreen control panel on the device, touch HMI or by remote control (as an optional accessory)	
Part number unit		29 0218 41 0001	29 0218 41 0002
Part number air distribution box		29 0218 11 0001	
Remote control part number*		29 0248 27 0001	

*Further specific accessories like Return Air Grille & EasyStart Touch on request



TOUCH PANEL

APP*

REMOTE CONTROL**

HMI**



Various control options possible via touchscreen on the indoor panel,
app (via Bluetooth), remote control or central HMI

* Free Breezeonic app available in the Apple and Google Play app stores; smartphone shown is not included in the scope of delivery

** Optional accessories

EBERSPÄCHER CLIMATE
CONTROL SYSTEMS INTERNATIONAL GMBH
EBERSPÄCHERSTRASSE 24
73730 ESSLINGEN, GERMANY

PHONE: +49 (0) 711 939-00
info@eberspaecher.com
www.eberspaecher-climate.com

