



CLIMATE CONTROL SYSTEMS / RECREATIONAL VEHICLES

HEATING AND COOLING SOLUTIONS FOR MOTORHOMES AND CAMPERVANS

Auxiliary heating, mobile and stationary cooling systems

The background image shows the interior of a motorhome. On the right, there is a dark grey fabric sofa with a matching headrest. The wall behind the sofa is covered in light-colored wood paneling. To the left of the sofa, there is a dark, possibly black, vertical element, likely a window or a door frame. The overall lighting is soft and even.

THE PERFECT TEMPERATURE, EVERY TIME

Being on the road in your motorhome means enjoying nature and freedom: driving wherever you want, staying wherever you want, and hitting the road whenever you want. Be it summer or winter, no one wants the weather or the seasons dictating their itinerary.

With an Eberspaecher auxiliary heater or climate control device, you can satisfy your wanderlust all year round. You can rest assured that it runs efficiently and quietly, courtesy of our state-of-the-art technology. What's more, using a fuel operated heater helps to reduce your propane consumption – so there's nothing holding you back!



COMPLETE INDEPENDENCE SOLUTIONS FOR HEATING AND COOLING

Whether you're traveling to Spain or the North Cape, Eberspaecher is your go-to partner for solutions to keep the temperature in your trusty motorhome just right. Thanks to our extensive expertise in climate control systems, we can offer our customers tailored solutions for all their heating and cooling needs, alongside the perfect control units for easy and convenient operation. As a one-stop shop, we are proud to provide our solutions from a single source.

Our products range from highly efficient air heaters for creating the perfect temperature in no time, water heaters for mist-free wrap-around windshields or for warm tap water when used with a boiler, to a broad selection of sophisticated accessories and cutting-edge control units for your new auxiliary heater. Our cooling system is also a real winner: it uses very little electricity and runs quietly. With climate control taken care of, you can sit back and enjoy your vacation.

SAVE PROPANE WHILE BOOSTING YOUR VACATION BLISS

The advantages of an Eberspaecher fuel operated heater compared with a propane heater really do speak for themselves. Propane heating uses about 80% of the propane reserves on winter camping trips, meaning you either have to transport a substantial supply of propane cylinders along with you or take on the hassle of constantly finding new cylinders and the right adapters – no mean feat when you are abroad. A diesel or gasoline operated heater gets rid of all that stress as it runs off the motorhome's large fuel tank – and very efficiently at that. This means you will need propane only for cooking and to operate the refrigerator.

ADVANTAGES:

- Uses fuel from the motorhome's large fuel tank
- Fuel is conveniently available at service stations around the world
- Time-consuming task of finding and changing propane cylinders reduced to a minimum
- Fewer propane cylinders frees up load capacity and storage space
- Does not eat into the propane supply for cooking and for the refrigerator



CONTROL
UNIT



REMOTE
CONTROL



AIR
OUTLETS



STATIONARY
COOLING
SYSTEM



HOT WATER
SYSTEMS



WATER
HEATER



AIR
HEATER



BLOWER
HEATER



E-AIR
HEATER



PTC HEATER



PORTABLE
AIR HEATER



FUEL
OPERATED
HEATERS



ELECTRICAL
HEATERS

* Only available to manufacturers.
Retrofitting not currently possible.



AIR
CONDITIONERS



CONTROL
UNITS
AND ACCESSORIES



EBERSPÄCHER AIRTRONIC

If you want a rapid, convenient solution to make the interior of your motorhome toasty warm, then look no further than the Eberspaecher Airtronic air heater. The Airtronic can quickly heat up your interior to the exact temperature you desire because it works by heating only the air and due to it is extremely efficient and quiet motor, using it for long periods or at night is no problem.

AIR HEATER ADVANTAGES:

- Power setting for extremely fast interior heating
- Direct heat and efficient operation: unlike in a combination heater, the tap water is not heated along with the air, ensuring very high efficiency
- Extremely low fuel and electricity consumption
- Automatic interior temperature control with temperature pre-setting
- Prevents condensation from forming and clears icy or foggy windows
- Space-saving installation either underfloor, in a false floor, in a seat base or storage compartment
- Fuel is supplied from the vehicle's tank

AIRTRONIC 3 ADVANTAGES:



- Runs extremely quietly:
 - Enjoy some calm and tranquility: Dynamic, stepless heating performance control ensures whisper-quiet operation by switching the heater on and off as little as possible
 - Optimised temperature sensor for accurate heating performance control
 - Virtually silent fuel delivery thanks to a new, electrically controlled metering pump.
- Can be operated anywhere in the world: the integrated altitude sensor enables automatic altitude adjustment up to 5,500 m*; no additional altitude kit necessary
- Brushless motor for increased service life
- A wide range of heaters to suit any heating requirement from 2 kW to 8 kW
- Additional installation positions possible
- Also available as gasoline models (Airtronic S and Airtronic M models)



* depending on the version

EBERSPÄCHER AIRTRONIC

THE RIGHT AIR HEATER FOR EVERY NEED

AIRTRONIC S3 COMMERCIAL



- Auxiliary heater with max. 2.2 kW heating performance
- Very small dimensions, ideal for tight installation spaces (will even fit under the seat structure)
- Also suitable as a supplementary heater for the front area

Version		D2L (diesel)	B2L (gasoline)
Voltage	V	12*	12
Heating performance control		Stepless	
Heating performance	kW	0.85 to 2.2	1.0 to 2.0
Electrical power consumption	W	6 to 28	11 to 26
Fuel consumption	l/h	0.1 to 0.28	0.14 to 0.26
Weight	kg	2.5	
Main dimensions L x W x H	mm	310 x 115 x 122	

* Also available as a 24 V diesel version. Please see our website for more details.

AIRTRONIC M3 COMMERCIAL



- Auxiliary heater with powerful heating performance up to 4 kW
- Compact dimensions

Version		D4L (diesel)	B4L (gasoline)
Voltage	V	12*	12
Heating performance control		Stepless	
Heating performance	kW	1.05 to 4.0	1.3 to 4.0
Electrical power consumption	W	6 to 37	8 to 38
Fuel consumption	l/h	0.12 to 0.49	0.17 to 0.55
Weight	kg	4.5	
Main dimensions L x W x H	mm	376 x 140 x 150	

* Also available as a 24 V diesel version. Please see our website for more details.

AIRTRONIC M3 RECREATIONAL



- A heater developed specifically for motorhomes; high air throughput suitable for long, complex heating air ducting.
- Auxiliary heater with powerful heating performance up to 4 kW
- Compact dimensions

Version		D4R (diesel)*	B4R (gasoline)*	D4R CI-Bus (diesel)*/***
Voltage	V	12**	12	12
Heating performance control		Stepless		
Heating performance	kW	1.05 to 4.0	1.3 to 4.0	1.05 to 4.0
Electrical power consumption	W	7 to 53	10 to 54	7 to 53
Fuel consumption	l/h	0.11 to 0.51	0.17 to 0.55	0.11 to 0.51
Weight	kg	4.5		
Main dimensions L x W x H	mm	371 x 140 x 150		

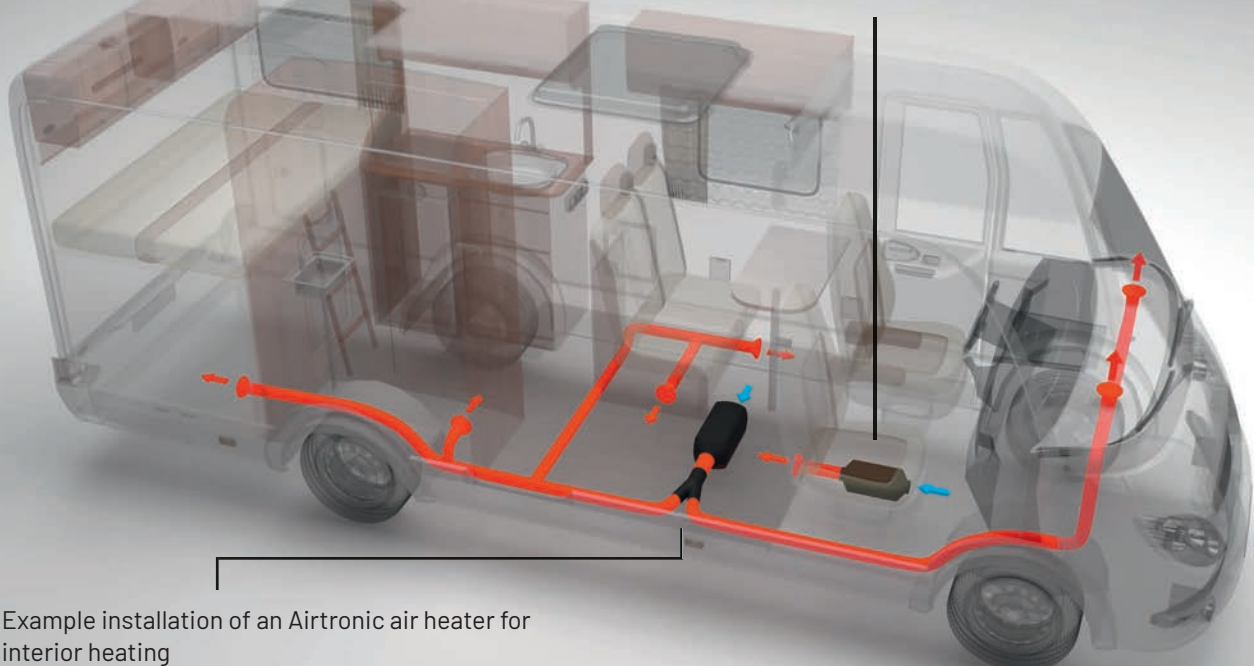
* Can be used in motorhomes and boats with long, complex heating air ducting, for example, if several rooms are to be heated.

** Also available as a 24 V diesel version. Please see our website for more details.

*** Auxiliary heater for integration into the CI-Bus on-board management system.

Please see our website for more information about the 6 kW **Airtronic L3** and the 8 kW **Airtronic XL3**.

Example installation of a small Airtronic air heater as a supplementary heater for the front area and for winter camping



Example installation of an Airtronic air heater for interior heating

EBERSPÄCHER VEHICLE KITS

AIRTRONIC VEHICLE KITS



VOLKSWAGON T5 / T6 AFTERMARKET KITS



- VW T5 / T6 kits come SUPPLIED WITH Heater Fuel Pump, Easy Start Pro, Bracket and all ancillaries

29.2113.30.0005	AS3 D2L 12V DIESEL VW T5 / T6 INTERNAL KIT
29.2113.30.0006	AS3 D2L 12V DIESEL VW T5 / T6 EXTERNAL KIT
29.2113.00.0075	AS3 D2L 12V DIESEL VW T5 / T6 EXTERNAL KIT + 2m EXT LOOM

VOLKSWAGON T5 / T6 OEM KITS



- To fit to digital control panel via CAN / LIN connection
- Includes: heater fuel pump, exhaust, silencer, air ducting, external bracket
- Easy Start Pro controller & Fuel Pick Up are not included but can be fitted and ordered separately

29.2113.00.0097	AS3 D2L 12V DIESEL T5 / T6 OEM KIT
-----------------	------------------------------------

EBERSPÄCHER VEHICLE KITS

AIRTRONIC VEHICLE KITS



FORD TRANSIT CUSTOM AFTERMARKET KITS



- Ford Transit Custom kits come SUPPLIED WITH Heater Fuel Pump, Easy Start Pro, Bracket and all ancillaries

29.2113.30.0040

AS3 D2L 12V DIESEL FORD TRANSIT CUSTOM KIT

29.2113.30.0044

AS3 B2L 12V PETROL FORD TRANSIT CUSTOM KIT

AFTERMARKET KITS ALSO AVAILABLE

- Mercedes
- Renault
- Nissan
- Citroen
- Peugeot
- Toyota
- Fiat
- Vauxhall

EBERSPÄCHER VEHICLE KITS

AIRTRONIC VEHICLE KITS



MOTORHOME KITS - EXTERNAL



- Heater installation kit with EasyStart Pro
- Includes 1 meter of exhaust, 1 meter of ducting and a single air outlet

29.2113.30.0001	AS3 D2L 12v DIESEL KIT inc. EASY START PRO
29.2113.30.0002	AS3 D2L 24v DIESEL KIT inc. EASY START PRO
29.2113.30.0003	AM3 D4R 12V DIESEL KIT inc. EASY START PRO
29.2113.30.0004	AM3 D4L 24V DIESEL KIT inc. EASY START PRO

MOTORHOME KIT - INTERNAL



- Heater installation kit with EasyStart Pro
- Includes 2 meters of exhaust, silencer, 1 meter of ducting, single air outlet and 32mm floor plate.

29.2113.30.0007	AS3 D2L 12V DIESEL KIT inc. EASY START PRO
29.2113.30.0008	AS3 D2L 24V DIESEL KIT inc. EASY START PRO
29.2113.30.0009	AM3 D4R 12V DIESEL KIT inc. EASY START PRO
29.2113.30.0010	AM3 D4L 24V DIESEL KIT inc. EASY START PRO



EBERSPÄCHER VEHICLE KITS

AIRTRONIC VEHICLE KITS

STANDARD BOXED HEATER (STAINLESS STEEL BOX VERSION - SIDE MOUNT)



- Standard externally mounted heater in a stainless steel protective box. Includes EasyStart Pro controller and 4 meters of ducting (D2 Version) / 6meters (D4 Version)
- Floor plate and fuel pick up are not included

29.2113.30.0016	AS3 D2L 12V SIDE MTD Bxd Ext E/S Pro
29.2113.30.0017	AS3 D2L 24V SIDE MTD Bxd Ext E/S Pro
29.2113.30.0020	AM3 D4R 12v SIDE MTD Bxd Ext 75 Duct
29.2113.30.0021	AM3 D4L 24v SIDE MTD Bxd Ext 90 Duct
29.2113.30.0019	AM3 D4L 24v STD Bxd Ext 90 Duct E/S ProA
29.2113.30.0025	AS3 D2L 12V STD Bxd Ext 60mm Mini Mod

STANDARD BOXED HEATER KIT (STAINLESS STEEL BOX VERSION- STANDARD MOUNT)



- Standard externally mounted heater in a stainless steel protective box. Includes EasyStart Pro controller and 4 meters of ducting (D2 Version) / 6meters (D4 Version)
- Floor plate and fuel pick up are not included

29.2113.30.0013	AS3 D2L 12V STD Bxd Ext 60mm E/S Pro
29.2113.30.0014	AS3 D2L 24V STD Bxd Ext 60mm E/S Pro
29.2113.30.0015	AS3 D2L 12V STD Bxd Ext 75mm E/S Pro
29.2113.30.0018	AM3 D4R 12v STD BXD EXT 75 Duct E/S Pro
29.2113.30.0019	AM3 D4L 24v STD Bxd Ext 90 Duct E/S ProA
29.2113.30.0025	AS3 D2L 12V STD Bxd Ext 60mm Mini Mod





EBERSPÄCHER MOBILE AIR HEATER

- POLARN

The compact Polarn heater provides heat wherever it is needed. The compact, diesel-fueled heating system is easy to transport and is ready to use in a very short space of time. It is the ideal solution for rescue teams, service work, and other similar purposes. Wherever a flexible and uncomplicated heating solution is needed to dispel the cold, in order to ensure people's well-being and to protect technical equipment and other goods

PORTABLE HEATING TECHNOLOGY:

- High heating performance Rapid readiness for use
Mobile and versatile
- Runs quietly
- Low fuel and electricity consumption No maintenance
- In-built fuel tank

WIDE RANGE OF APPLICATIONS:

- Heating tents and awnings
- Heating rooftop tents
- Service/maintenance work (telecommunications installations, pipework installations, power supply, etc.)
- Emergency heating/pre-heating of tents used by aid organizations (Red Cross, UNICEF) and in military camps (armed forces, NATO) Heating for containers
- Heating buildings or areas that are sensitive to frost or moisture
- Heating summer houses and rural buildings



EBERSPÄCHER POLARN

AIRTRONIC POLARN

STANDARD BOXED HEATER (STAINLESS STEEL BOX VERSION - SIDE MOUNT)



- The Polarn 4000 is fully equipped with a fuel tank, a 1.5-m-long and 90-mm-diameter air hose, an exhaust pipe, a connecting cable for battery or 230-V connection, and a carry bag for the hot air hose.

		Power	High	Medium	Low	Off
Control/heat settings Heat flow	W	4,000	3,000	2,000	900	–
Heating air throughput – without back pressure	kg/h	180	150	110	60	24
Fuel consumption	l/h	0.51	0.38	0.25	0.11	–
Electric power consumption	V	12 / 24	12 / 24	12 / 24	12 / 24	12 / 24
When running	W	40	24	13	7	5
When starting	W	< 100	< 100	< 100	< 100	< 100
Weight	kg	approx. 11				
Tank capacity	liters	5				
Technical designation		Polarn 4000 (12 V)		Polarn 4000 (12 V/230 V)		Polarn 4000 (24 V)
Order number		24 9988 00 0020		24 9988 00 0021		24 9988 00 0022
Technical features		Fully automatic 4-stage control			Ventilation possible as an option	
		Permanent function control via status display			Simple installation	
		Low electricity and fuel consumption			Undervoltage switch-off	
					No maintenance	





EBERSPÄCHER ELECTRIC AIR HEATERS -

AVAILABLE Q1 2025

New electric E-Airtronic EHVI air heaters ensure pleasant, comfortable temperatures in the motorhome interior, even over longer periods of time.

The E-Airtronic EHVI is now available for all types of motorhomes. While the product variant with 230 V and 1 kW heating power was developed as a purely electric heater especially for electric motorhomes, it is now also available as a coolant heat exchanger variant.

A combination of both with an integrated electric air heater and a coolant heat exchanger as hybrid version is another version of the modular system. The E-Airtronic features a durable, quiet fan with variable speed operation.

ELECTRICAL HEATING TECHNOLOGY:

- 230 V electric heater with 1 kW heat output
- 12V step- and brushless fan
- Very small dimensions
- Simple to install wherever heating is required
- Silent fan with variable speed
- Removable filter
- Multiple installation options within the vehicle
- Can be fitted with a ventilation grille or duct connector
- Optional integration of an additional coolant heater



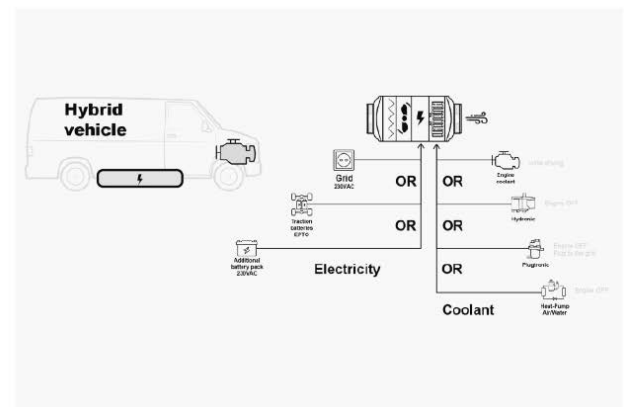
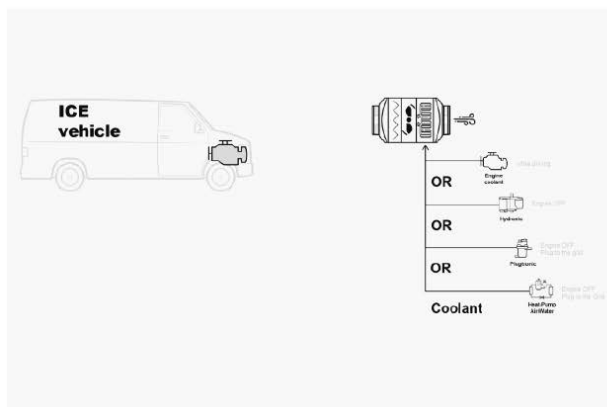
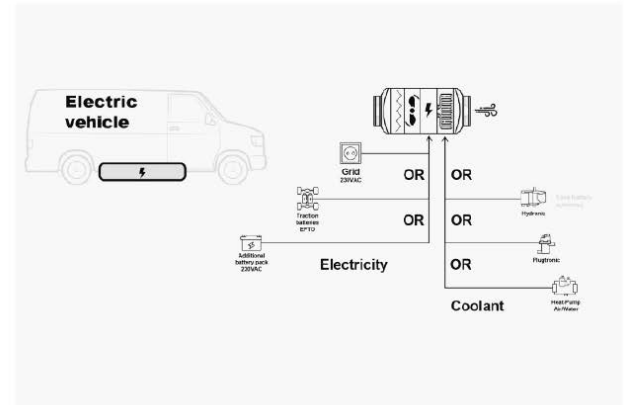
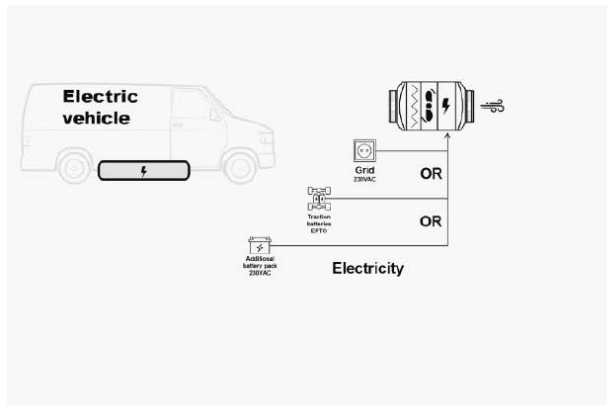
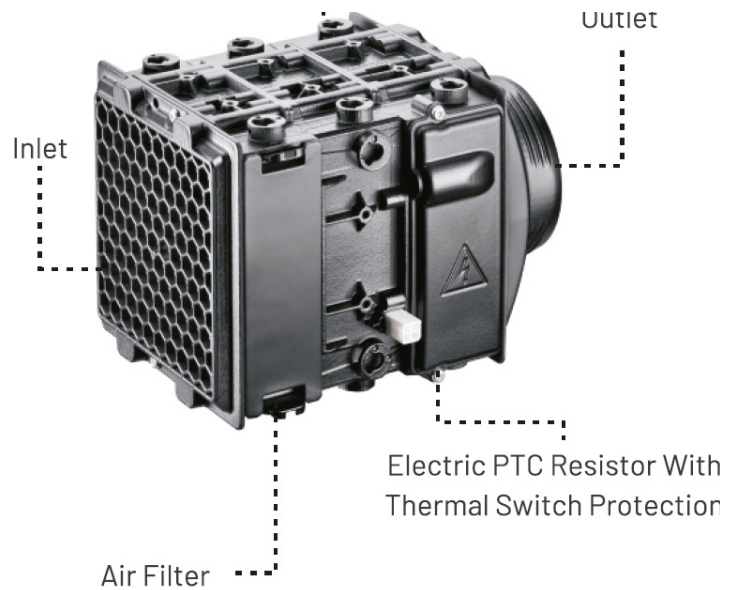
EBERSPÄCHER E AIR HEATERS

THE RIGHT AIR HEATER FOR EVERY NEED

E-AIRTRONIC



- Available Q1 2025



EBERSPÄCHER E AIR HEATERS

THE RIGHT AIR HEATER FOR EVERY NEED

MINIKELEC EHV



• Available now

Model		FAI				
Heating Performance	kW	0.17	0.3	0.42	0.48	0.75
Airflow	m³/h	70				
Electrical Consumption	W	8				
Weight	kg	1		1.1	1	
Ventilation speed level		1				
Dimensions l x w x h	mm	80 x 219 x 122				
Blower voltage	V DC	24	24	12	24	24
PTC voltage	V DC	24	24	12	24	24
Part number		83 0012 03 0323	83 0012 03 0322	83 0012 03 0330	83 0012 03 0321	83 0012 03 0320





EBERSPÄCHER HYDRONIC WATER HEATERS

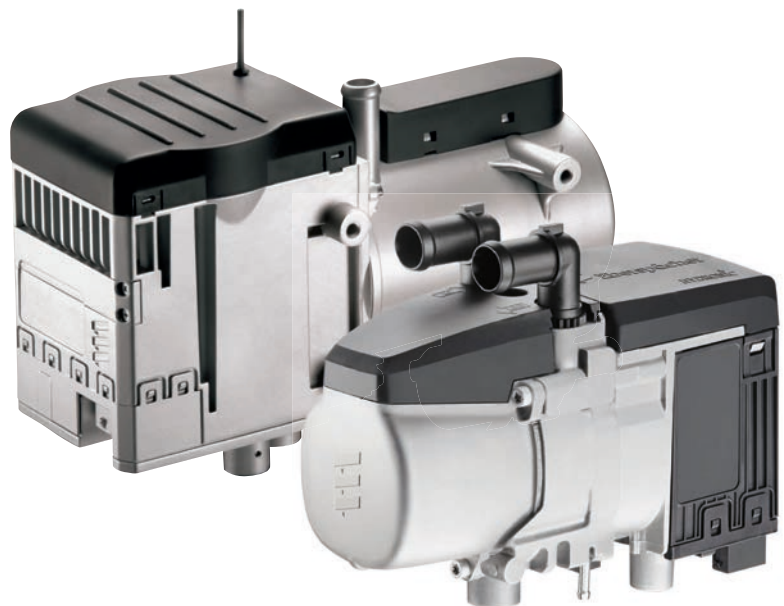
The Eberspaecher Hydronic water heater is a genuine all-rounder. It can be easily integrated into the engine's existing coolant circuit, takes up minimal space and can be used as a supplementary heater for the front area and for pre-heating the engine or as a stand-alone solution for heating the interior. When used in combination with a boiler, the Hydronic also lets you heat your tap water – whether for washing up in the kitchen or for a long, hot shower after a hike in the snow.

WATER HEATER ADVANTAGES:

- Extremely high heating performance up to 12 kW
- Two-fold benefit of heated interior plus pre-heated engine: starting is more gentle on the engine, uses less fuel, and is environmentally friendly
- Can be used to heat tap water in combination with a boiler
- Quickly clears icy windshield or steamed-up windows on the inside
- Runs quietly

ADDITIONAL FEATURES:

- Heat distribution via the vehicle's air ducts or convector
- Low fuel and electricity consumption
- Fuel is supplied from the vehicle's tank
- Reduces propane consumption
- Available as diesel or gasoline models
- Option for space-saving installation in the engine compartment
- Can be operated at high altitudes



EBERSPÄCHER HYDRONIC

THE IDEAL CHOICE AS A FRONT OR MAIN HEATER

HYDRONIC S3 ECONOMY



- State-of-the-art heater that simultaneously heats the engine and front area
- Manual high altitude operation over 1,500 m with the EasyStart Pro control unit
- Can be retrofitted as a supplementary heater for the front area and for pre-heating the engine

Version		Hydronic S3 Economy*	Hydronic S3 Economy*	Hydronic S3 Economy*	Hydronic S3 Economy*
Model (fuel)		D4E (diesel)**	D5E (diesel)**	B4E (gasoline)	B5E (gasoline)
Voltage	V	12			
Heating performance	kW	1.3 to 4.3	1.3 to 5.0	1.8 to 4.3	1.8 to 5.0
Power consumption, heater	W	5 to 27	5 to 32	7 to 24	7 to 32
Power consumption, water pump	W	18			
Fuel consumption	l/h	0.53	0.59	0.57	0.67
Dimensions L x W x H	mm	215 x 91 x 124			
Weight empty	kg	2.0			

* For mains operation (230 V/50 Hz), e.g. in camping or parking areas, installation must be carried out with the special cable harness (item no.: 25 2652 82 11 00). The cable harness is included in the universal installation kit for recreational vehicles and boats (item no.: 25 2652 82 00 00).

** Also available as a Hydronic S3 Commercial 24 V diesel version. Please see our website for more details.



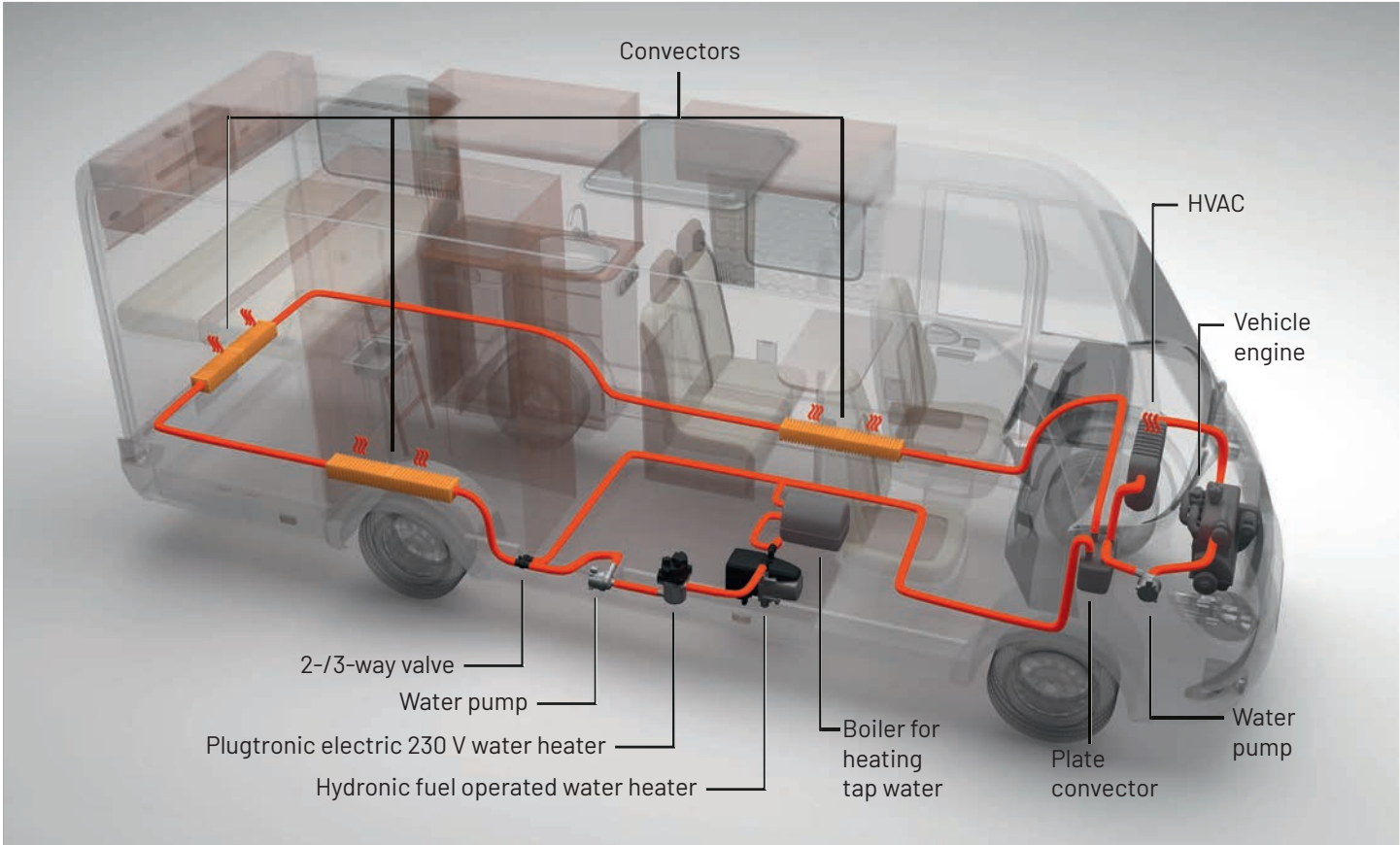
HYDRONIC M



- Available in three models between 8 and 12 kW heating performance (M8/M10/M12)
- Very long service life (6,000 h)
- Standard altitude capability up to 3,500 m (M10/M12)

Diesel version		Hydronic M8*	Hydronic M10	Hydronic M12
Voltage	V	12 / 24		
Heating performance	kW	1.5 / 3.5 / 5.0 / 8.0	1.5 / 3.5 / 8.0 / 9.5	1.2 / 1.5 / 3.5 / 5.0 / 9.5 / 12.0
Power consumption, heater	W	35 / 39 / 46 / 55	35 / 39 / 60 / 86	34 / 35 / 39 / 46 / 86 / 132
Power consumption, water pump	W	29		
Fuel consumption	l/h	0.18 / 0.40 / 0.65 / 0.90	0.18 / 0.40 / 0.90 / 1.20	0.15 / 0.18 / 0.40 / 0.65 / 1.20 / 1.50
Dimensions L x W x H	mm	331 x 138 x 221		
Weight	kg	6.2		

*100% biodiesel-compatible in accordance with FAME DIN EN 14214



Example installation of a Hydronic water heater in combination with an electric heater



MADE FOR LIFE ON THE ROAD

Regulate the heat in the interior quickly and easily while you're in the vehicle, pre-program the operating times at your leisure, or simply pre-heat your motorhome in advance from the piste. All this is possible – you can even combine offline and online control. What matters is what *you* want.

A built-in control unit is always the right choice for a mobile home, enabling you to make custom settings in your vehicle at any time. Even when you're not in the vehicle, you are still in full control via an additional app.



EBERSPÄCHER HYDROPLATE HOT WATER SYSTEM

The Eberspaecher Hydroplate system is suitable for installation into Motorhome, Caravan, Welfare, Utility and Messing vehicle applications.

The system is generally used when stationary, but can also be used whilst on the move. It utilises either a separate diesel fuel tank or the vehicles own diesel tank. It also requires a 12V DC power supply.

We can offer optional fan matrix units, from 2kW to 4kW, that can be used to supply ducted hot air dependent on the specific application.

HYDROPLATE



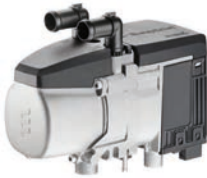
The Hydroplate system can be installed in combination with an HS3 heater or remotely from the heater .

- Approximately 10-15 minutes warm up time
- Produces a flow of hot water at 40°C, to be used for washing and showering.
- Between 6 and 11 litres per minute.

EBERSPÄCHER HYDROPLATE

HYDROPLATE HOT WATER SYSTEM

HYDROPLATE



- State-of-the-art heater that simultaneously heats the engine and front area
- Manual high altitude operation over 1,500 m with the EasyStart Pro control unit
- Can be retrofitted as a supplementary heater for the front area and for pre-heating the engine

Version		Hydronic S3 Economy*	Hydronic S3 Economy*
Model (fuel)		D4E (diesel)**	D5E (diesel)**
Voltage	V	12	
Heating performance	kW	1.3 to 4.3	1.3 to 5.0
Power consumption, heater	W	5 to 27	5 to 32
Power consumption, water pump	W	18	
Fuel consumption	l/h	0.53	0.59
Dimensions L x W x H	mm	215 x 91 x 124	
Weight empty	kg	2.0	

* For mains operation (230 V/50 Hz), e.g. in camping or parking areas, installation must be carried out with the special cable harness (item no.: 25 2652 82 11 00). The cable harness is included in the universal installation kit for recreational vehicles and boats (item no.: 25 2652 82 00 00).

** Also available as a Hydronic S3 Commercial 24 V diesel version. Please see our website for more details.



HS3 HYDROPLATE KIT—COMPACT PRE-ASSEMBLED



- Heater mounted on the Hydroplate tank for external fitting
- Hermetically sealed locker / external installation required.

29.2135.30.0010	HS3 D4E 12V HYDROPLATE COMPACT KIT
29.2135.30.0111	HS3 D5E 12V HYDROPLATE COMPACT KIT

HS3 HYDROPLATE KIT— FOR RETRO FITTING



- Heater mounted remotely from the tank
- Externally mounted heater

29.2135.30.0006	HS3 D4E 12V HYDROPLATE FOR RETRO FITTING
-----------------	------------------------------------------

HS3 HYDROPLATE KIT— FOR RETRO FITTING WITH ADDITIONAL FAN MATRIX



- Heater mounted remotely from the tank with a fan matrix providing warm air to the vehicle space.
- Hoses to be additionally specified
- Externally mounted heater

29.2135.30.0006	HS3 D4E 12V HYDROPLATE FOR RETRO FITTING
29.2180.30.0005	FAN MATRIX 4KW 12V

EBERSPÄCHER CONTROL UNITS AND ACCESSORIES FOR AIRTRONIC AND HYDRONIC HEATERS

With our modern EasyStart control units you can easily enjoy the comfort of your auxiliary heater in no time. They check all the right boxes for even the most discerning of motorhome owners: they are intuitive to operate and boast an attractive design and high-quality workmanship. You can choose between a built-in control unit or a web-based remote control system that can be linked up to many of the devices currently available. The Eberspaecher EasyStart is the modern way to operate heaters.

EASYSTART PRO



The EasyStart Pro control unit sets the new benchmark for our line of control units. As well as a timer function that allows up to three programming locations to be set, the EasyStart Pro comes with numerous practical features:

- Built-in control unit with integrated temperature sensor
- Operation of up to two heaters separately or two identical heaters (Airtronic or Hydronic) in a group
- Simple plain text diagnostics for users
- Integrated residual heat function for Hydronic heaters: efficient heating using the engine's residual heat
- Can be combined with the EasyStart Web**

EASYSTART WEB



With the EasyStart Web you can start your heater anytime and anywhere, regardless of where you are or where your vehicle is parked. The web-based remote control uses a web server that receives the commands you enter from the smartphone app or web browser and sends them in data form to the recipient via all the available cell phone networks. It couldn't be easier to use, and the range is unlimited:

- Always uses the cell phone network with the best signal*
- No need to insert or replace a SIM card
- Option to book a convenient, cost-effective 12-month flat rate
- Roaming function enables use in other countries without additional costs
- Displays the current status (e.g. operating mode, interior temperature, timer)
- The workshop can carry out detailed remote diagnostics
- Can be combined with the EasyStart Pro**

* Network coverage available in the following countries: Austria, Belgium, Czechia, Denmark, Estonia, Finland, France, Germany, Italy, Latvia, Lithuania, Norway, Poland, Romania, Sweden, Switzerland, the Netherlands and the United Kingdom. An up-to-date list of network coverage is available at: <https://myeberspaecher.com/#/customer/serviceDescription>

** Requires software update

CONTROLS



- Eberspacher’s EasyStart range puts you in control

22.1000.32.0700	MINI CONTROLLER
22.1000.34.1300	EASY START SELECT
22.1000.34.1500	EASY START TIMER
22.1000.35.2200	EASYSTART PRO TIMER TP7.1 12/24v
22.1000.35.3500	EASYSTART WEB
22.1000.34.1700	EASY START REMOTE



EBERSPÄCHER ACCESSORIES

THE RIGHT PART FOR EVERY NEED

BRACKETS



- Install kit for D2L, B2L and D4L applications, heater kit comes supplied with heater, fuel pump, exhaust, wiring loom, air intake ducting and fuel line, ancillaries included for full set up.
- No controller, install bracket, extended loom or fuel pick up.

29.2113.30. TBC	AS3 B2L PETROL 12V HEATER WITH ASSEMBLIES
29.2113.30.0046	AS3 D2L DIESEL 12V HEATER WITH ASSEMBLIES
29.2113.30.0045	AS3 D4L DIESEL 12V HEATER WITH ASSEMBLIES

BRACKETS



- Vehicle specific mounting brackets available
- Under-slung or internally mounted

29.2100.19.0327	BRACKET VW T5 AT D2 UNDERSLUNG
29.2100.19.0246	INTERNAL PLATE FLOOR ATD2 32mm FLANGE OFFSET
29.2100.19.1050	BRACKET AT D2 FORD CUSTOM UNDERFLOOR
29.2100.19.1054	PLATE PROTECTION FORD CUSTOM U/FLOOR (must be ordered with 29.2100.19.1050)
29.2100.19.1061	BRACKET D2 EXT BOXER / MERCEDES SPRINTER

LOOMS AND EXTENSIONS



- Extension looms to suit all your needs

29.2100.18.1120	LOOM EXTENSION 2M
29.2100.18.1121	LOOM EXTENSION 4M
29.2100.18.1122	LOOM EXTENSION 6M
29.2100.18.1123	LOOM EXTENSION 8M
29.2100.18.1124	LOOM EXTENSION 10M

FUEL KITS



- Vehicle specific fuel kits available

29.2180.01.0393	FUEL KIT TOYOTA HILUX 2023 >
29.2180.01.0418	FUEL KIT SPRINTER SENDER 2006 Ax2/3
29.2180.01.0424	FUEL KIT SPRINTER & AMAROK PICK-UP
29.2180.01.0419	FUEL KIT SPRINT/CRAFT KL1 OEM Ax2/3 OEM / Fuel Preparation (KL1 - Spigot on flexible tube near to fuel
29.2180.01.0433	FUEL KIT TOYOTA HI-LUXE EURO 6 TEE Ax2 /3
29.2180.01.0422	FUEL KIT VW CRAFTER SENDER 2017 Ax2/3
29.2180.01.0420	FUEL KIT SPRINTER SENDER 2018 Ax2/3
29.2180.01.0432	FUEL KIT TRANS/CUST AUX PICK-UP Ax2/3
29.2180.01.0427	FUEL KIT DUCATO QUICKFIT OEM Ax2/3 / OEM Fuel Preparation
29.2180.01.0431	FUEL KIT SSANGYONG SENDER KIT Ax2 /3
29.2180.01.0428	FUEL KIT BERLINGO/DELIVER9/AX2/AX3 / Only fits Maxus with white topped sender unit Other sender type
29.2180.01.0426	FUEL KIT MAST/MOV/Partner Valve Ax2/3 / FPR = Fuel Pressure Regulator Supplied
29.2180.01.0435	FUEL KIT FUEL SENDER STANDPIPE Ax2/3
29.2180.01.0421	FUEL KIT MERC ADD HTR Y PIECE AX2/3 / For Adding A Heater To A Vehicle With An OEM "Pre-Heater"
29.2180.01.0430	FUEL KIT CITROEN DISPATCH/BERLINGO Ax2/3
29.2180.01.0499	FUEL KIT Boxer Sender S/Pipe Ax2/3
29.2180.01.0429	FUEL KIT IVECO/BOXER SELF TAP Ax2/3
29.2180.01.0434	FUEL KIT TOYOTA HILUX BREATHER PICK UP
29.2180.01.0423	FUEL KIT VW T5 / T6 FUEL SENDER Ax2/3
29.2180.01.0425	FUEL KIT VIV/TRAF/EXPERT FPR Val Ax2/3 / FPR = Fuel Pressure Regulator Supplied
29.2180.01.0545	FUEL KIT TRANSIT CUSTOM / SPRINTER 18> TANK SENDER OEM TANK PREP AX2/AX3/HS3 / OEM Fuel
29.2180.01.0565	FUEL KIT TRANSIT / CUSTOM / SPRINTER



FEEL FRESH EVEN IN SUMMER

Heating is not our only speciality. Here at Eberspächer, we can also keep things cool: even in hot weather, our Breezonic stationary cooling system and our Camptronic provide the ideal temperatures in your motorhome interior.

Our climate control products are especially suited to the following requirements and applications:

- Customers looking for a retrofit cooling system that can be easily installed in an existing area of the vehicle.
- Customers who are sensitive to cold drafts, and therefore haven't found a climate control solution for their living area yet
- Independent campers who don't want to rely on a fixed power connection



EBERSPÄCHER BREEZONIC STATIONARY COOLING SYSTEM

The new, high powered Breezonic Air Conditioning System with Heat Pump functionality is the new, state of the art, roof top unit. Operating with a superior sustainable refrigerant R32, compared to the industry standard refrigerant R410A. The innovative inverter technology ensures a silent, constant operation and low energy consumption due to the speed-controlled compressor. The units were developed for maximum efficiency, with eight operational modes, fitting perfectly to your individual comfort needs. There are two versions available: The Breezonic Performance provides 2.5 kW of cooling and 2.4 kW of heating performance. The strongest model Breezonic Performance Plus provides 3.6 kW of cooling and 3.5 kW of heating performance.

BREEZONIC PERFORMANCE HP & BREEZONIC PERFORMANCE PLUS HP



BENEFITS

- Combined powerful cooling and heating via heat pump
- Extremely silent operation and low energy consumption with variable speed compressor
- Very low current and soft-ramp up
- High efficiency
- Uses the more environmentally friendly refrigerant R32
- Very flat design
- Night mode for quiet operation during sleep
- Eco mode for low energy consumption
- Very fast interior cooling using the turbo cooling function

OTHER FEATURES

- Various control options via touch screen on interior panel (ADB), remote control, App (via Bluetooth) or central HMI possible
- Very slim and stylish design of the interior panel with integrated, dimmable LED lighting
- Multiple function settings available: Heating, Cooling, Automatic, Timer, Turbo, Eco, De-Humidification, Fan only, 3 fan speed settings
- Operating temperature from -2 to +52 °C



BREEZONIC



- Easily installed in an existing area of the vehicle

81.1000.30.9432	BREEZONIC PERFORMANCE
81.1000.30.9431	BREEZONIC PERFORMANCE PLUS
29.0218.11.0001	BREEZONIC ADB (AIR DISTRIBUTION BOX)
29.0248.27.0001	BREEZONIC REMOTE CONTROL

Model		BREEZONIC PERFORMANCE	BREEZONIC PERFORMANCE PLUS
Voltage	V	230 V AC / 50 Hz	
Cooling performance	W	2.500	3.600
Heating performance	W	2.400	3.500
Weight Rooftop / Air Distribution Box (ADB)	kg	32 / 3,1	35,5 / 3,1
Current max. average cooling	A	4,34	6,38
Current max. average heating	A	4,11	5,89
Refrigerant		R32	
Dimensions of roof unit (L x B x H)	mm	1.051 x 698 x 250	
Dimensions of interior unit (L x B x H)	mm	503 x 482 x 45	
Hatch / Roof openings	mm	360 x 360 / 400 x 400	
Roof thickness	mm	25 – 100	
Communication interfaces		CI- Bus, RV-C, Bluetooth (app)	
Control unit		Control via app, touch screen control panel on device and via remote control (as optional accessory)	







EBERSPÄCHER CAMPERVAN COOLING SYSTEM - AVAILABLE Q4 2024

The innovative inverter technology ensures a very silent, constant operation and low energy consumption due to the speed-controlled compressor, the has been developed for maximum efficiency.

It fits discreetly and perfectly into the spare wheel bay under the vehicle, Suitable for all models of VW T5/T6.

The powerful cooling system provides up to 2.2kw of cooling performance meeting individual comfort needs.

CAMPERVAN COOLING 12V DC



BENEFITS

- Rear cooling on the move
- Cooling when connected to AC hookup



NOTES

NOTES

EBERSPAECHER UK
CLIMATE HOUSE, YEOMAN RD
RINGWOOD, BH24 3FA

PHONE: +44 (0) 1425 480151
enquiries@eberspaecher.com
www.eberspaecher-climate.com